



# CASE STUDY

*Match Charter Public School (Match) is an innovative, high-performing free public school in Boston. It is widely recognized for its success in preparing students for college and careers. Match currently includes four campuses which span grades preK-12. With their achievements, Match is expanding to include an enrollment of 1,250 students. To accommodate, additional classroom space will be needed soon.*

## MATCH COMMUNITY DAY CHARTER SCHOOL MODULAR BUILT

### KEY ACHIEVEMENTS

*50% faster than a conventional building*

*Finished with 2 1/2 times less waste than traditional building*

*Steel framing consisted of 72% recycled material*

*Minimal disruption to the school campus*

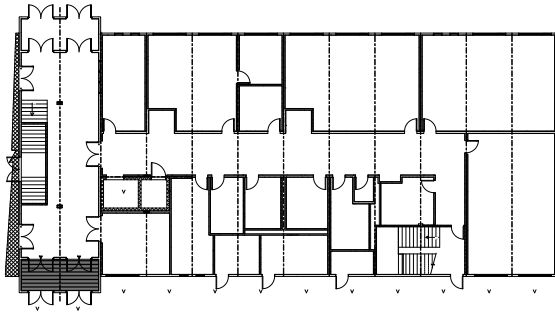
*Less environmental impact.*

*Flexible design for changing needs.*

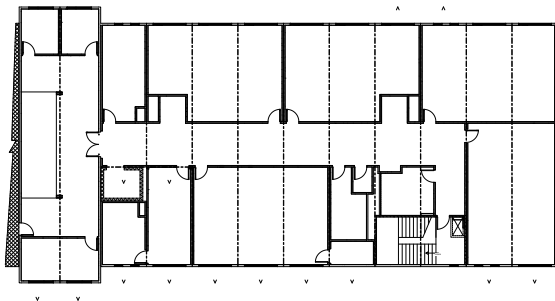
To develop the classroom buildings needed, modular construction was the obvious choice. Through a collaborative effort, Commodore Builders, Pope Industries, Studio G Architects, and Whitley Manufacturing were able to accelerate the construction process and reduce time and costs.

Whitley Manufacturing built two classroom buildings (both two-story) totaling 60,000 sq. ft. (40,000 & 20,000) and a third building, single-story, 2400 sq. ft. gymnasium locker room, with a total of 82 modules. The layout consisted of both traditional classrooms along with smaller, more flexible meeting areas and conference rooms. Off-site modular construction included structural, framing, drywall, insulation, doors, windows, misc. finishes, plumbing, HVAC, and electrical.

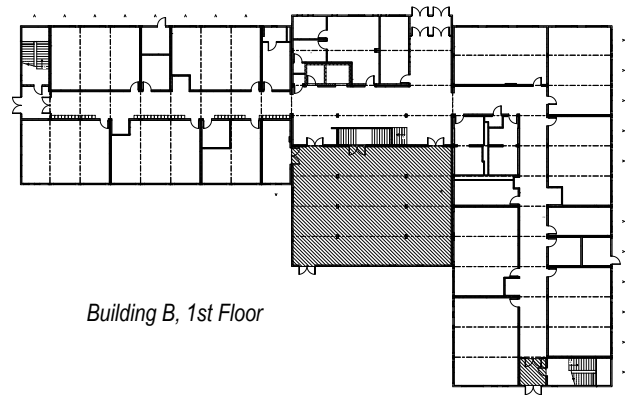
# Match Community Day Charter School



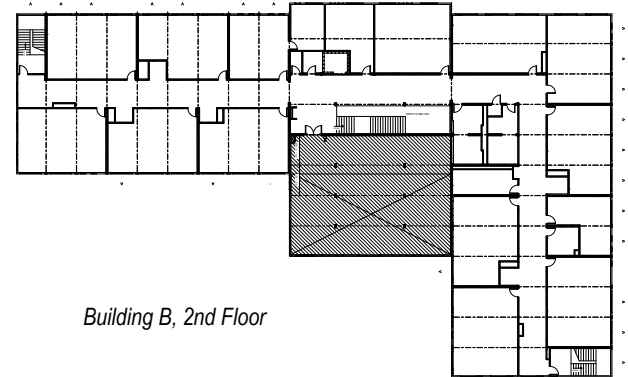
*Building A, 1st Floor*



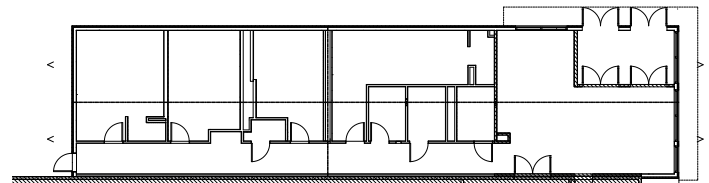
*Building A, 2nd Floor*



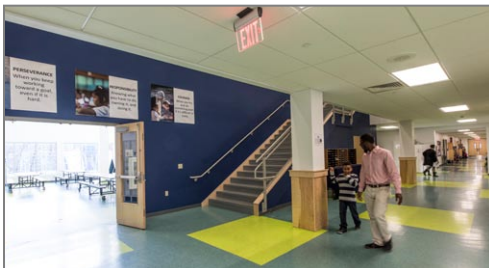
*Building B, 1st Floor*



*Building B, 2nd Floor*



*Locker Room Building*



## KEY FACTS

### PROJECT NAME

MATCH COMMUNITY DAY CHARTER SCHOOL

### LOCATION

HYDE PARK, MA

### PARTNERS

POPE INDUSTRIES  
COMMODORE BUILDERS  
STUDIO G ARCHITECTS

### PROJECT TYPE

ELEMENTARY SCHOOL

### BUILDING SIZE:

CLASS RM BLDG A: 20,000 SQ. FT.  
CLASS RM BLDG B: 40,000 SQ. FT.  
LOCKER RM BLDG: 2400 SQ. FT.

### BUILDING UNITS:

BLDG A: 28 MODULES  
BLDG B: 50 MODULE  
LOCKER RM: 4 MODULES

